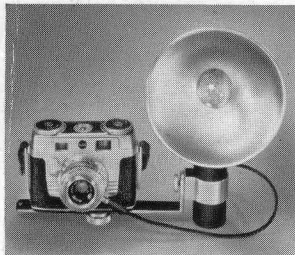


FLASH PICTURES

You can make pictures at night in full color or black and white with your Kodak Signet 35 Camera. All you need are the Kodak Flashholder, batteries, and lamps. For color, use Kodachrome Film Type A.

Attach the flashholder by screwing the bracket thumbscrew into the camera tripod socket. Remove the CAP from the FLASH POST on the rim of the shutter, and attach the cord. Flashing the lamp is controlled by the synchro feature of the shutter.



Use "C" size batteries (photoflash are best). They should test at least 5 amperes. The Kodak B-C Flashpack can be used instead of the "C" size batteries. The Flashpack and a 22½-volt photoflash battery will

Caution: Since lamps may shatter when flashed, the use of a Kodak 2-Way Flashguard or other shield over the reflector is recommended. Do not flash the lamps in an explosive atmosphere.

Do not insert flash lamps in the reflector if the shutter is open — the lamp may flash and a serious burn may result.

make a battery-condenser unit out of your Kodak Flashholder at a nominal cost. It provides long battery life and trouble-free synchronization—see page 33.

Use Class M (No. 5 or 25) flash lamps only. These lamps can be used at all shutter speeds. Class F flash lamps (SM or SF) *should not* be used. Be sure the bottom of the lamp base is clean and bright before inserting the lamp in the flashholder. If the contact point is tarnished, rub it on a rough surface.

Exposure Guide Numbers can be used to determine exposure. Divide the numbers in the table below by the distance in feet from lamp to subject to find *f*-number. For example, using Kodachrome Film Type A with the shutter set at 1/100 second, and the subject 5 feet away, the correct lens opening would be $55 \div 5$ or *f*/11.

Lamp	No. 5 or 25			
	Shutter Speed	1/300	1/100	1/50
Kodachrome Type A*	32	55	60	70
Plus-X	70	100	110	140
Super-XX	95	140	160	200

*With Kodachrome Film Type A and a No. 5 lamp, use a Kodak Light Balancing Filter No. 81C; with a No. 25 lamp, use a No. 81D Filter. These filters give warmer tones than when no filter is used.

Flash Exposures—The following table provides exposure information for Kodachrome Film Type A in ready-reference form for average indoor camera-to-subject distances, with the shutter set at 1/25 second.

f/3.5	f/4	f/5.6	f/8	f/11	f/16	f/22
20 ft	17 ft	12 ft	9 ft	6½ ft	4½ ft	3¼ ft

Note: These numbers apply when the lamps are in 4- to 5-inch satin-finished reflectors such as the Kodak Flashholder Model B.

Supplementary Flash Outdoors—In bright sunlight, lighting contrast is frequently excessive, particularly with near-by, side- or back-lighted subjects. More pleasing results are obtained by using blue flash lamps to illuminate the shadows. In the following table note the various combinations that can be used. With flash fill-in, use the same settings for front, side, or back lighting.

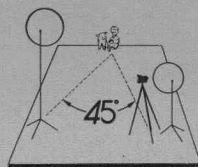
Lamp-to-Subject Distances for Supplementary Flash

Shutter Speed and Lens Opening	1/25 between f/8 and f/11	1/50 between f/5.6 and f/8	1/100 between f/4 and f/5.6
5B or 25B Lamp	5 to 10 feet	7 to 14 feet	10 to 20 feet



FLOOD PICTURES

Practical, flexible home lighting is provided by flood lamps in suitable reflectors such as the Kodak Vari-Beam Lights. A good basic lighting is shown in the diagram.



Exposure Table for Kodachrome Film Type A with Two No. 2 Flood Lamps in Kodak Vari-Beam Lights Set at STILL

3½ feet 1/25 second at f/4.5	8 feet ½ second* at f/8	11 feet 1 second* at f/8
------------------------------------	-------------------------------	--------------------------------

*Shutter set at "B."

Included with the Kodak Vari-Beam Lights is an instruction manual which is complete with tables, suggestions, and picture-taking arrangements.



AROUND THE CLOCK PICTURE TAKING



Sundown, dark days, or dark interiors need not mark the end of picture taking. You can still make good pictures by using longer exposure or by using flood or flash lamps.

LONG EXPOSURES FOR STILL SUBJECTS

The "B" setting on your shutter enables you to keep the shutter open for as long as required. Excellent night pictures can be made by using long exposures. Many novel pictures are made by the reflection of lighted buildings or monuments on wet pavement or fireworks, fireside scenes, etc.

Both camera and subject must be still

22

Silhouettes can be striking when a little forethought goes into their composition.



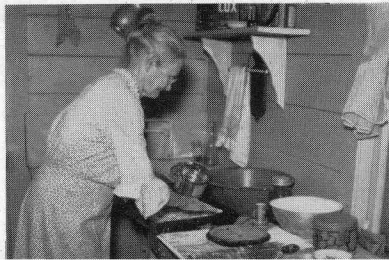
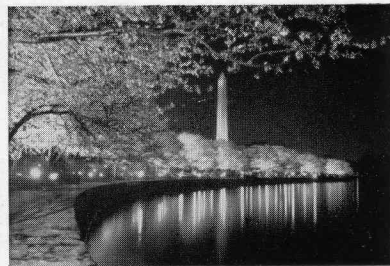
during the exposure. Use a tripod such as the Kodak Eye-Level Tripod or other firm support.

To make a long exposure (the focus and lens opening having been set), set the shutter on "B." Cock the shutter. Press the release and hold it down for the exposure required; then let the release spring back. Avoid jarring the camera. The Kodak TBI Metal Cable Release No. 2 is useful for longer exposures.

Note: *To advance the film when a cable release is used, press and hold the rewind lever (see page 7) and rotate the winding knob ¼ turn; then release the lever and turn the knob until it locks.*

23

Reflections from wet pavements or bodies of water are spectacular. Place your camera on a solid support or tripod, aim and hold the shutter open on "B" for the exposure required. In this case 30 seconds to 1 minute.



How could grandma be more characteristically portrayed than with a flash shot like this?

KODAK FILMS

The Kodak Signet Camera uses Kodak 135 Film.

Kodachrome Film — For superb color pictures. The film is processed, at no additional cost, at an Eastman Kodak Laboratory. The resulting transparencies are returned to you, mounted (unless otherwise specified) for projection or viewing. They can also be used to obtain Kodacolor Prints. Kodacolor Prints and Enlargements are available from your Kodachrome transparencies. These are attractive 3½ x 5-inch full-color prints with white borders. Kodacolor Enlargements can be supplied in sizes 5 x 7 and 8 x 10. The first Kodacolor Print from each transparency is moderately priced and there is a great saving on all following prints. Kodacolor Prints and Enlargements *must* be ordered through your Kodak dealer.

Use Kodachrome Film Daylight Type for daylight pictures and Kodachrome Film Type A for flood or flash pictures. 20 or 36 exposures.

To select transparencies for printing, hold each one at an angle near a sheet



of white paper which is illuminated by a tungsten light. Any transparency which has been carefully exposed under good picture-taking conditions will appear attractive when viewed in this manner. In general, transparencies of this type will produce pleasing prints. Don't choose a slide for a color print because it looks good when being projected in a darkened room. You'll be viewing your Kodacolor Prints and Enlargements in a lighted room, so it's wise to select your slides as mentioned above. Choose only transparencies which are (1) clear and sharp, and (2) evenly lighted—not contrasty.

Kodak Plus-X Panchromatic Film — An excellent film for general outdoor and well-lighted interior use. The low graininess and high resolving power permit high-quality enlargements. 20 or 36 exposures.

Kodak Super-XX Panchromatic Film — A very high-speed film for use when the light is poor. Especially valuable for use with artificial light. 20 or 36 exposures.



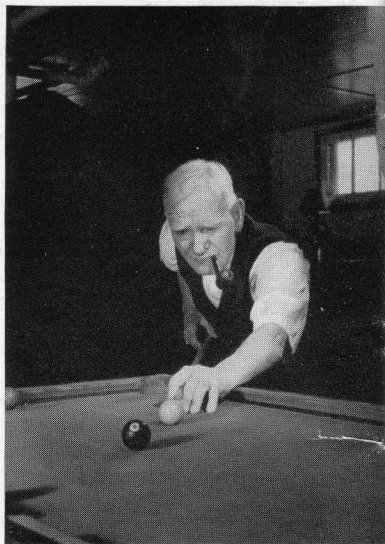
TIPS

for better pictures



Tell a Story

The best pictures are those which tell a simple story and tell it at a glance. You'll treasure pictures of day-to-day activities around the home, perhaps including some entirely unposed ones. But whatever the subject, a moment spent in expressing an idea will repay you many times in satisfaction with your finished prints.



Look Beyond the Subject

Whatever the background, make sure that it is a setting or frame for your picture, not an intruding element in the composition. Look beyond the subject; your camera does.

Side and Back Lighting

Pictures in which the light comes from the side of the scene often give a feeling of depth. Shadows across the foreground make you feel that you are looking into the picture.

With either side or back lighting it is important to shield the lens from direct light by keeping it in the shade, or by using the Kodak Lens Hood (see page 29).



ACCESSORIES

A Kodak Leather Carrying Case of top grain leather protects your camera and permits it to be ready at a moment's notice. The screw in the base of the case screws into the tripod socket of the camera. An exposure guide is found inside the front lid. You can leave the adapter ring and filter on and still close the case.

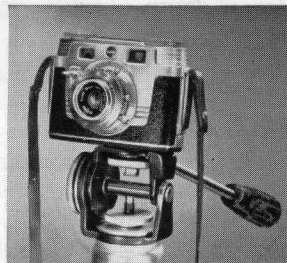


Cable Releases — Two releases are available for your Kodak Signet 35 Camera: the Kodak TBI Metal Cable Release No. 2, which simplifies the making of time exposures and the Kodak Metal Cable Release No. 5.

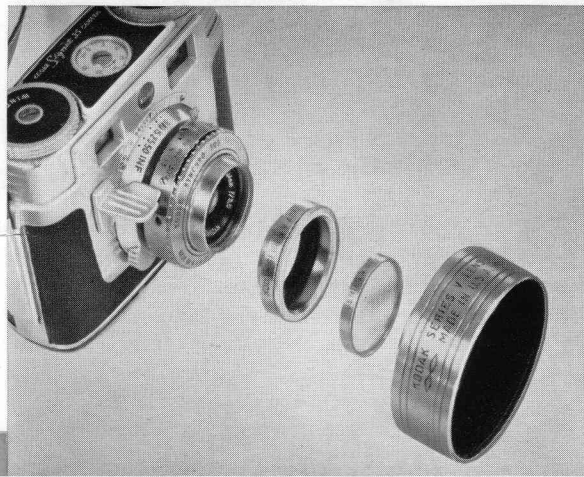
To attach a cable release, screw the release into the hole in the shutter housing, under the trip lever.

Kodak Eye-Level Tripod

—This sturdy aluminum tripod provides a rigid and dependable support for your camera. Folded, it measures 22½ inches; extended, 60 inches. The use of the Kodak Turn-Tilt Tripod Head (an accessory) is recommended for maximum facility in changing the position of the camera on the tripod.



Kodak Combination Lens Attachments — Series V Lens Attachments are used with this camera. The basis of the combination is the Series V, No. 22, screw-in type or 1½-inch slip-on type Kodak Adapter Ring. Kodak



Wratten Filters, Portra Lenses 2+ and 3+, Pola-Screen, and Lens Hood are available in this series. If you use a Pola-Screen in combination with another attachment such as a filter, use a Series V-VI Step-up Ring and a Series VI Pola-Screen.

To assemble a filter or lens in the ring, unscrew and remove the insert, place the filter or lens in the ring, and replace the insert. The Kodak Lens Hood can be used in place of the insert.

Filters add greatly to the pictorial effects of black-and-white pictures by darkening the sky and recording the clouds. The Kodak Wratten Filters K-2, G or A can be used for this purpose. These result in medium, strong, and extra-strong effects respectively. *Never use these strongly colored filters with Kodachrome Film.* With Kodachrome Film use a Kodak Pola-Screen to darken the sky.

Filters for Kodachrome Film — Kodachrome pictures made in open shade under a clear blue sky, or on over-cast or hazy days will be improved if a Kodak Skylight Filter is used.

Kodachrome Film Type A can be used for daylight exposures with the Kodak Daylight Filter for Type A Color Films.

For flash photography with Kodachrome Film, Kodak Light Balancing Filters No. 81C with No. 5 flash lamps and No. 81D with No. 25 flash lamps are recommended for best color rendering.

Working Distance and Field Size with Kodak Portra Lens

(The use of a 1 + lens is not recommended. It would overlap the range of the camera and the 2 + lens.)

KODAK PORTRA LENS 2 +			Approx. Field Size Based on Kodak Readymount Opening (inches)
Camera Lens Setting — Feet	Distance Subject to Lens* (inches)		
Inf.	19½	10⅞	15
50	19½	10	14¾
25	18½	9½	14¼
15	17¾	9¼	13⅝
10	16⅞	8⅞	13⅜
8	16¼	8¼	12¼
6	15¼	7¾	11½
5	14¾	7½	11
4	13¾	6⅞	10¼
3½	13½	6½	9⅝
3	12¾	6⅞	9
2½	11½	5⅝	8¼
2	10¼	5	7¼

*Subject-to-lens distance is measured to front of the Portra Lens

Total depth of field at f/8 ranges from ¾ inch at the minimum distance to 3¼ inches at the maximum distance.

KODAK PORTRA LENS 3 +			Approx. Field Size Based on Kodak Readymount Opening (inches)
Camera Lens Setting — Feet	Distance Subject to Lens* (inches)		
Inf.	13	6¾	10
50	12¾	6⅝	9¼
25	12¾	6⅝	9¼
15	12½	6¼	9¼
10	11¾	6	8⅞
8	11½	5⅞	8⅝
6	11	5⅝	8⅝
5	10⅝	5⅝	8
4	10½	5½	7⅝
3½	9¾	4⅞	7¼
3	9⅞	4⅞	6⅞
2½	8⅞	4⅝	6½
2	8⅞	3⅞	5¾

*Subject-to-lens distance is measured to front of the Portra Lens

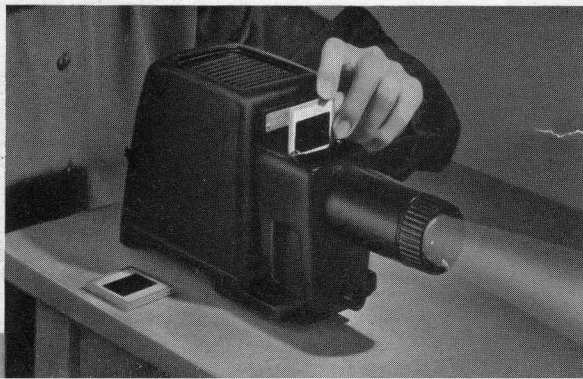
Total depth of field at f/8 ranges from ½ inch at the minimum distance to 1½ inches at the maximum distance.

Use these tables since none are supplied with the Portra Lenses for use with this camera.

Kodaslide Merit Projector—You get big-picture projection and even illumination with the Kodaslide Merit Projector. An $f/3.5$ Lumenized Kodak Projection Ektanon Lens, new, unique slide-feeding mechanism, built-in elevation device—all these combine to make your scenes live again in brilliant coloring.

Kodaslide Table Viewer 4X—This new viewer provides complete one-package projection for your 35mm transparencies. Your slides are enlarged over 4 times and brilliantly illuminated by the Lumenized optics without fuss or bother in a normally lighted room. The Kodak Projection Ektanon 50mm $f/3.5$ Lens projects the image to the special daylight type viewing screen. It is easily transported and only needs plugging into a 100- to 125-volt, a-c or d-c line to be instantly ready for use. If you wish the added feature of a slide changer, the Kodaslide Table Viewer Model A should be your choice. It will accept 75

32



ready mounts or 30 double-glass slides. Your slides are enlarged nearly 5 times.

The Kodak B-C Flashpack offers a battery-condenser method of flashing lamps. It provides more than enough energy for accurate synchronization and dependable lamp firing. In addition, you'll be able to use the same battery from 1 to 2 years. Ask your dealer to show you one today.

The Kodak Flashholder Model B is a highly efficient, lightweight yet rugged accessory for flash work. An ejector button on the back quickly releases the burned-out lamps. A decal on the reflector gives instant exposure information. The Kodak Flashholder Extension Unit Model B is also available for multiple-flash work.

33

